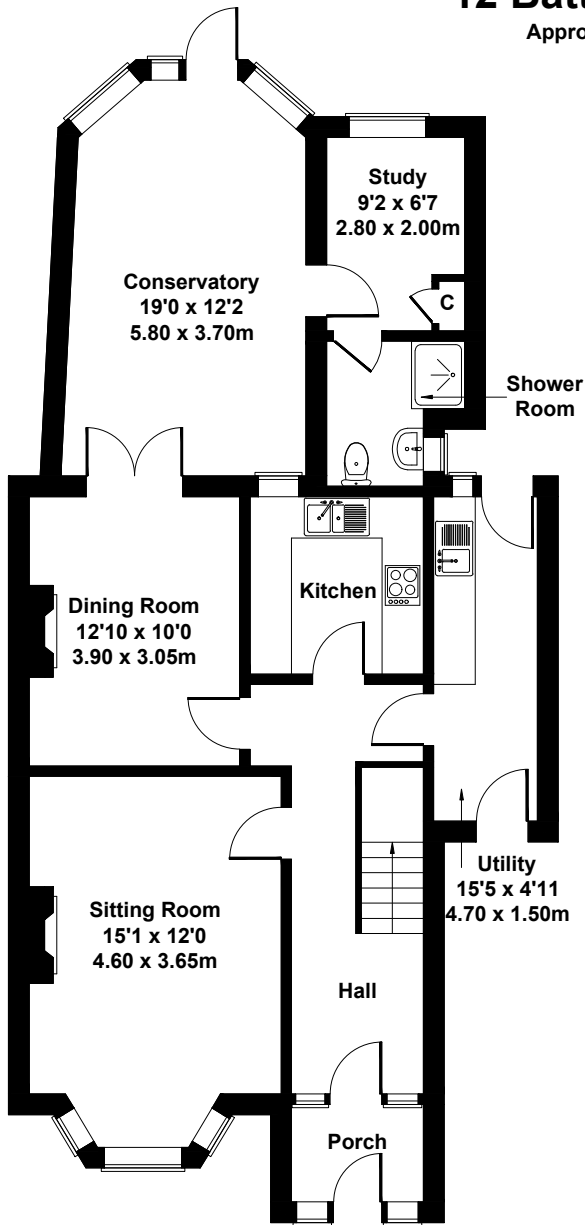
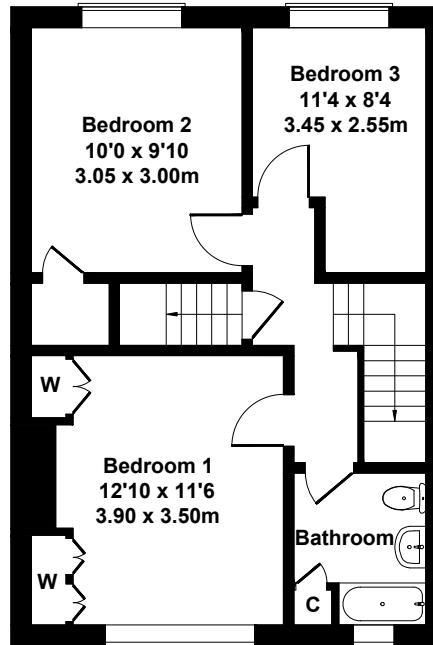


12 Battery Road, Cowes

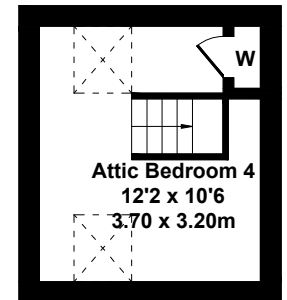
Approximate Gross Internal Area
1658 sq ft - 154 sq m



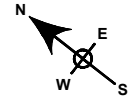
GROUND FLOOR



FIRST FLOOR



SECOND FLOOR



SKETCH PLAN FOR ILLUSTRATIVE PURPOSES ONLY

All measurements walls, doors, windows, fittings and appliances, their sizes and locations, are approximate only. They cannot be regarded as being a representation by the seller, nor their agent.

Produced by Potterplans Ltd. 2023